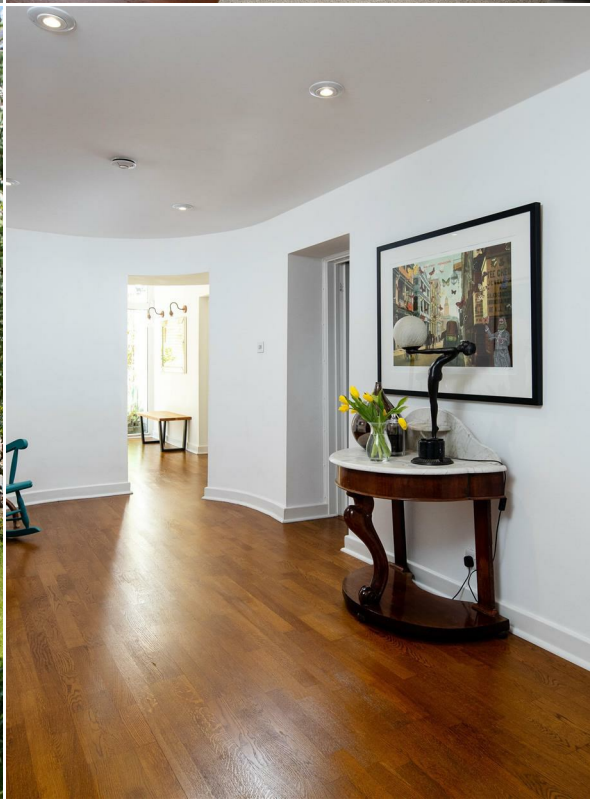


18 The Avenue, Bristol, BS9 1PE

www.hydes.co.uk



18 The Avenue, Bristol, BS9 1PE

OFFERS INVITED BETWEEN £800,000 AND £850,000

A truly stunning and spacious (circa 1700 sq ft) three double bedroom garden apartment, forming part of this impressive detached Victorian house, on a quiet, secluded and popular road close to the Durham Downs, offering a particularly large private garden. Finished to the highest specification, some of the many benefits on offer are, a beautifully tended, private and sunny 75" by 35" rear garden (for the use of this flat alone), off street parking, three double bedrooms, it's own private entrance, and a stunning David Salisbury conservatory adjoining a beautifully appointed kitchen.



3

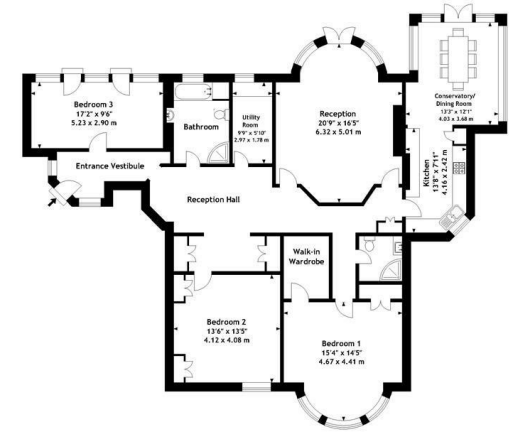


2



2

Garden Flat Chelsfield, 18 The Avenue, Sneyd Park, Bristol BS9 1PE
Approx. Area 1700.80 Sq. Ft - 158.00 Sq. M



For illustrative purposes only. Not to scale.

Whilst every attempt has been made to ensure accuracy of the floor plan all measurements are approximate and no responsibility is taken for any error, omission or measurement.
Floor plan produced by Advantage Matters.





Energy Efficiency Rating		Current	Potential
Very energy efficient - lower running costs			
(92 plus) A			
(81-91) B			
(69-80) C			
(55-68) D		59	71
(39-54) E			
(21-38) F			
(1-20) G			
Not energy efficient - higher running costs			
England & Wales		EU Directive 2002/91/EC	

Environmental Impact (CO ₂) Rating		Current	Potential
Very environmentally friendly - lower CO ₂ emissions			
(92 plus) A			
(81-91) B			
(69-80) C			
(55-68) D			
(39-54) E			
(21-38) F			
(1-20) G			
Not environmentally friendly - higher CO ₂ emissions			
England & Wales		EU Directive 2002/91/EC	

OTHER INFORMATION



28 Princess Victoria Street, Bristol, BS8 4BU
 Tel: 0117 973 1516
 post@hydes.co.uk | www.hydes.co.uk

IMPORTANT NOTE

Hydes Of Bristol and any joint agents give notice that (i) they have no authority to make or give representations or warranties in relation to the property. These particulars do not form part of any offer or contract and must not be relied upon as statements or representations of fact. (ii) Any areas, distances or measurements are approximate. The text, photographs and plans are for guidance only and are not necessarily comprehensive. It should not be assumed that the property has all the necessary planning, building regulations or other consents and Hydes Of Bristol have not tested any services, equipment or facilities. Purchasers must satisfy themselves by inspection or otherwise. (iii) In accordance with the consumer protection from unfair trading regulations, please note that the working condition of these services, or kitchen appliances has not been checked by the Agents but at the time of taking particulars we were informed that all were in working order. Please also note that current government legislation demands that as selling agents for this property, Hydes Of Bristol require written evidence of the origin/source of finance for funding for any prospective purchaser wishing to purchase this property. This confirmation shall be required prior to the vendor entering into any contract of sale and our instructions from the vendor are to this effect.